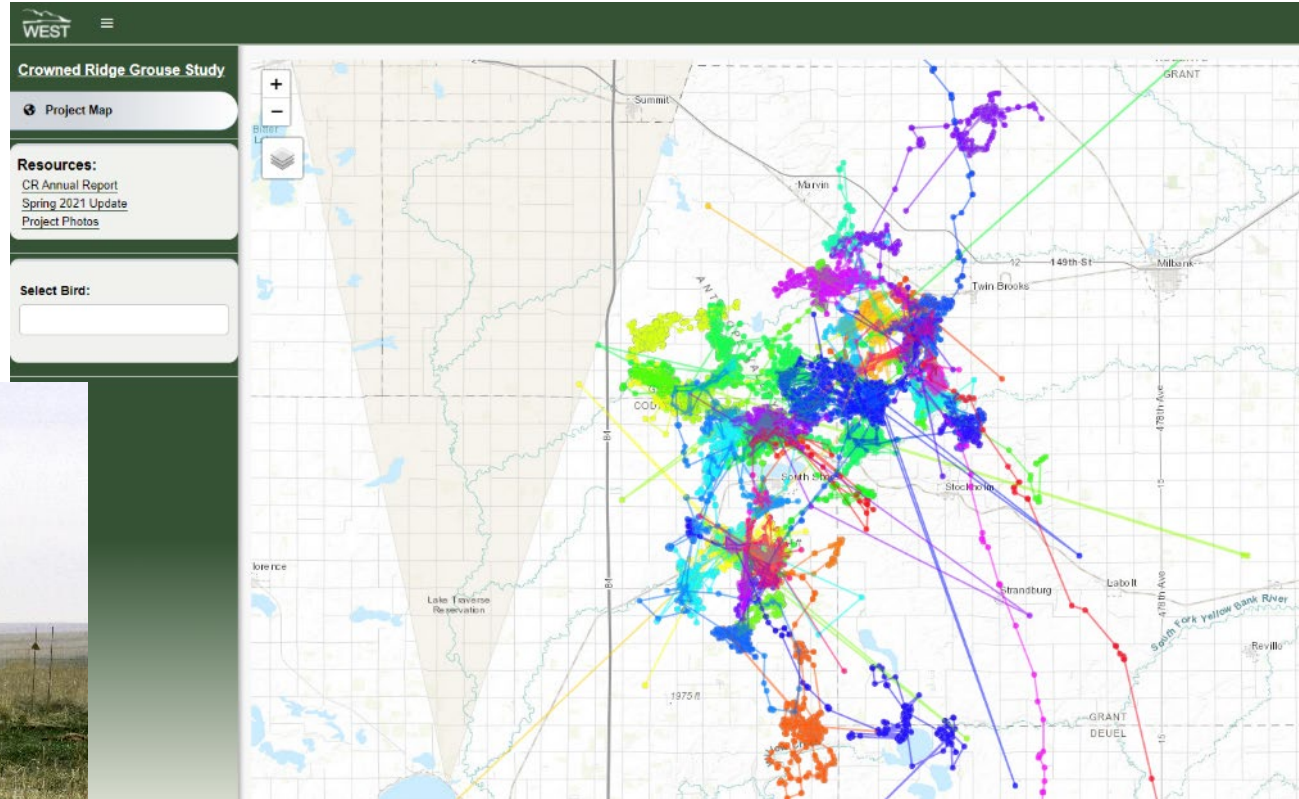
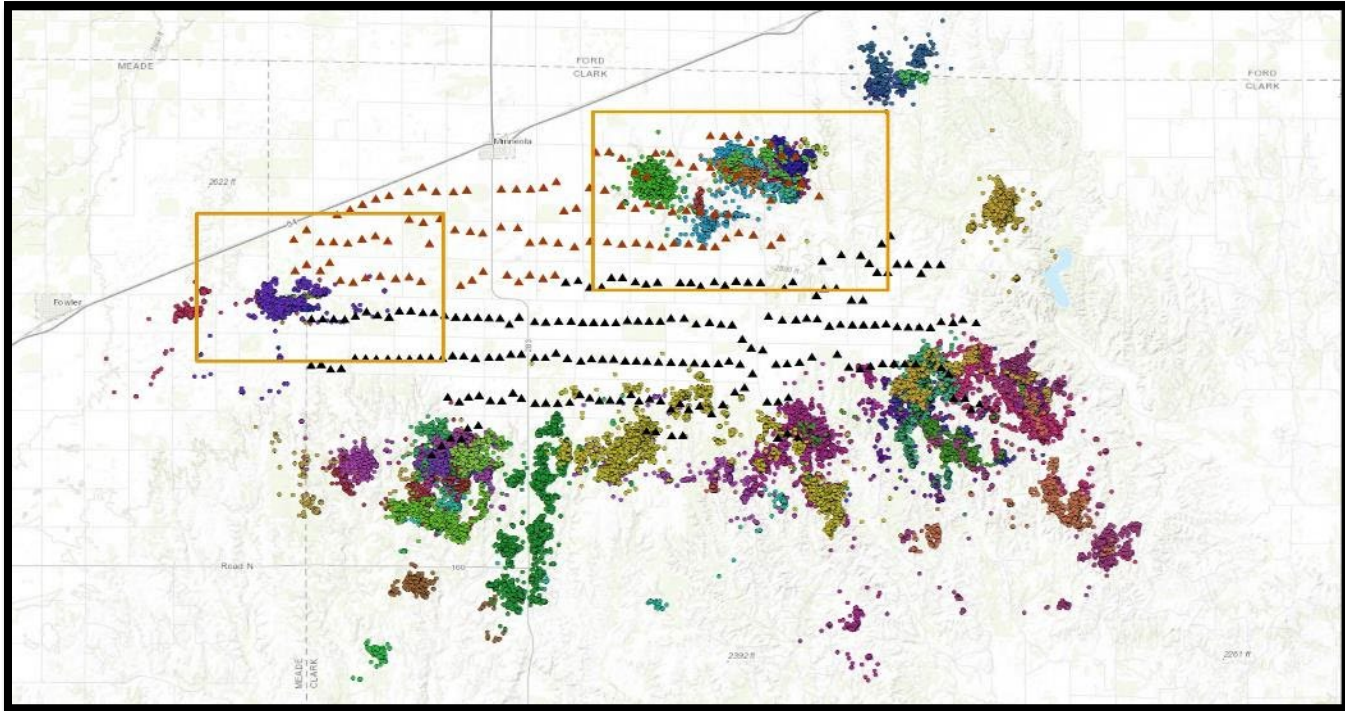


Monitoring

- Telemetry studies
- Habitat Assessments
- Lek surveys
- Cumulative effects



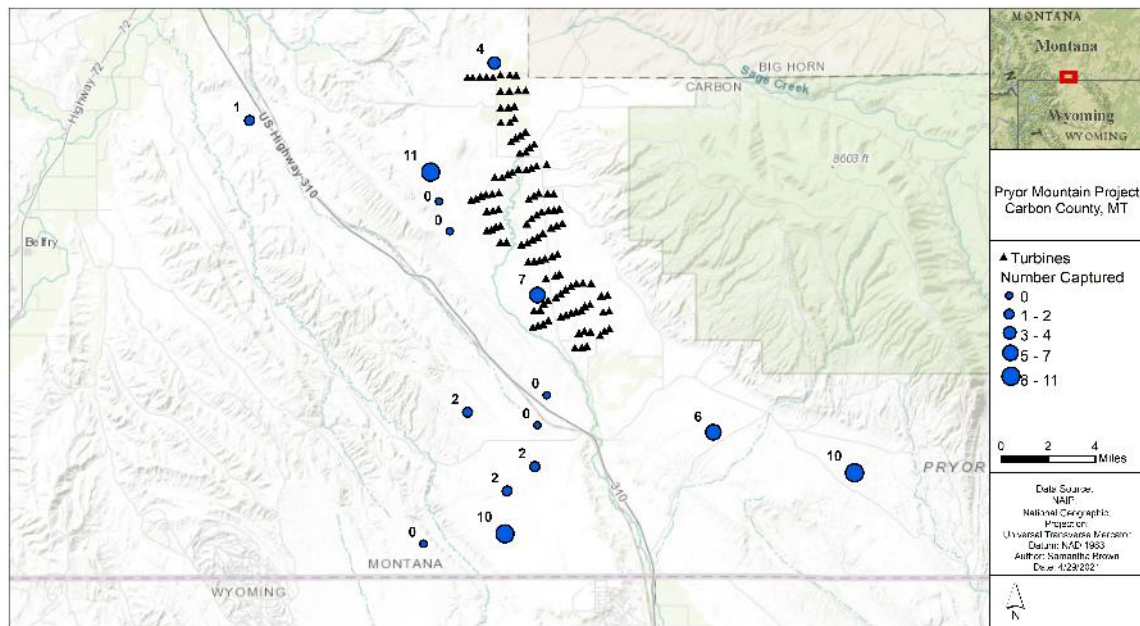
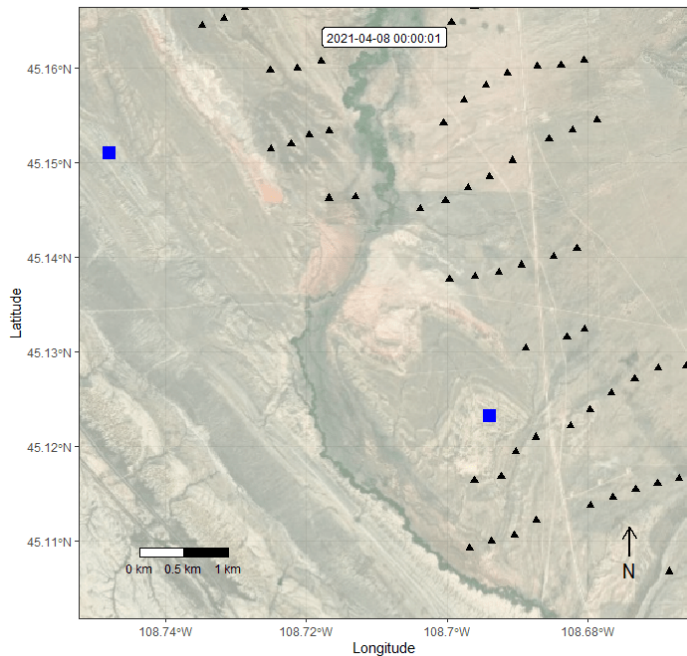
Monitoring



Monitoring – Pryor Mountain

Principal Investigator	Dr. Jeffrey L. Beck (UW)
Investigator	Dr. Aaron C. Pratt (UW)
Investigator	Dr. Kurt T. Smith (WEST)
Investigator	Chad LeBeau (WEST)
Collaborators	BLM, MFWP, PacifiCorp
Bureau of Land Management	
Paul Morey	Biologist
Rebecca Newton	Biologist
Montana Department of Fish, Wildlife, and Parks	
Shawn Stewart	Biologist
PacifiCorp	
Travis Brown	Environmental Manager
Shawn Childs	Environmental Manager
Tommy Lauhoff	Site Manager

Monitoring – Pryor Mountain



Conclusion

- Case-by-case evaluation
- Existing data and additional data collection may be necessary to understand potential impacts
- Understand the extent of potentially affected population
- Predict direct and indirect impacts
- Adjust siting to minimize impacts
- Mitigate impacts to conserve grouse populations
- Monitor impacts and incorporate into future grouse conservation plans
- Challenge associated with monitoring and opportunities for improvement





WEST Headquarters | 415 West 17th Street, Suite 200, Cheyenne, Wyoming 82001 | 307-634-1756

WEST, ULC Headquarters | Suite 303, 1000 9th Avenue SW, Calgary, Alberta T29 2Y6 | 403-629-6741