

Montana's Greater Sage- Grouse Conservation Strategy

Montana Wildlife & Wind
Energy Virtual Workshop

April 29, 2021

Carolyn Sime et al.

csime2@mt.gov



Joel
Maes



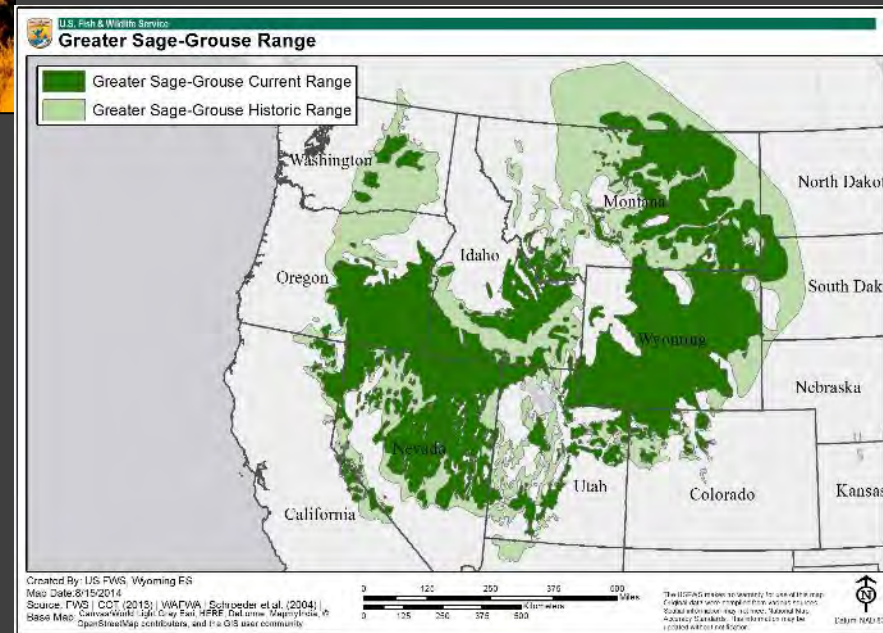
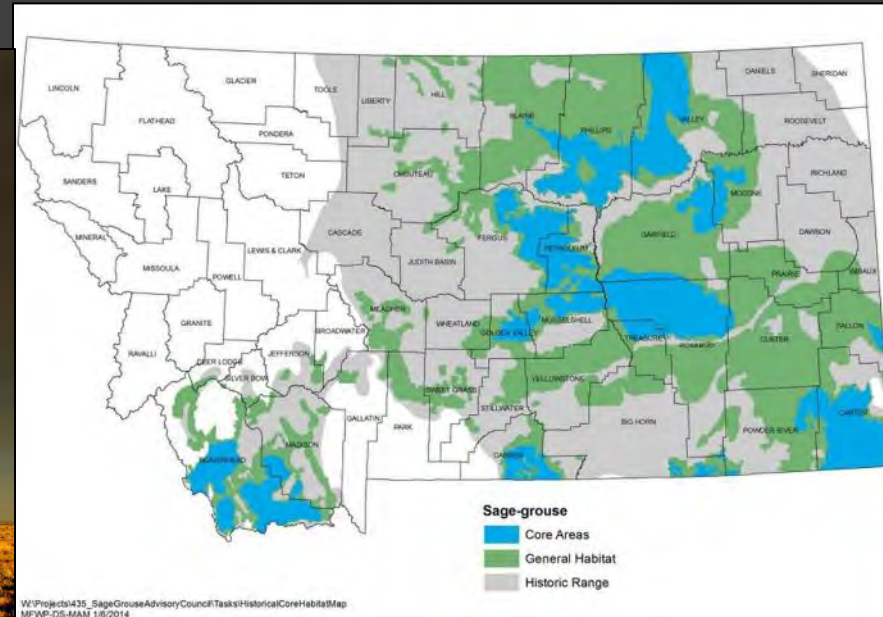
MONTANA SAGE GROUSE
Habitat Conservation Program



USFWS

Rangewide Historic Greater Sage- Grouse Declines

(each state will have home-grown Strategy)



Ecological Realities of Greater Sage-Grouse



Sagebrush specialist

Placed-based, especially breeding (leks)

Faithful to home; poor pioneer

Very sensitive to habitat change, anthropogenic disturbances; not adaptable

Time lag to detect population declines: 3-5 years

CONSERVATION CONCERNS

Habitat Loss, Fragmentation, Wildfire, Invasive Species



Lack of Mechanisms to Address Threats

MONTANA'S CONSERVATION STRATEGY

Consultation Process Guides Development
Grants to Maintain, Enhance, Restore Habitat
Mitigation to Offset Impacts of Development, Address Threats

All Lands, All Hands

“Core Areas”



1. Executive Order 12-2015
2. Sage Grouse Stewardship Act, 2015
3. Private Land Stewardship
4. BLM, USFS Plans

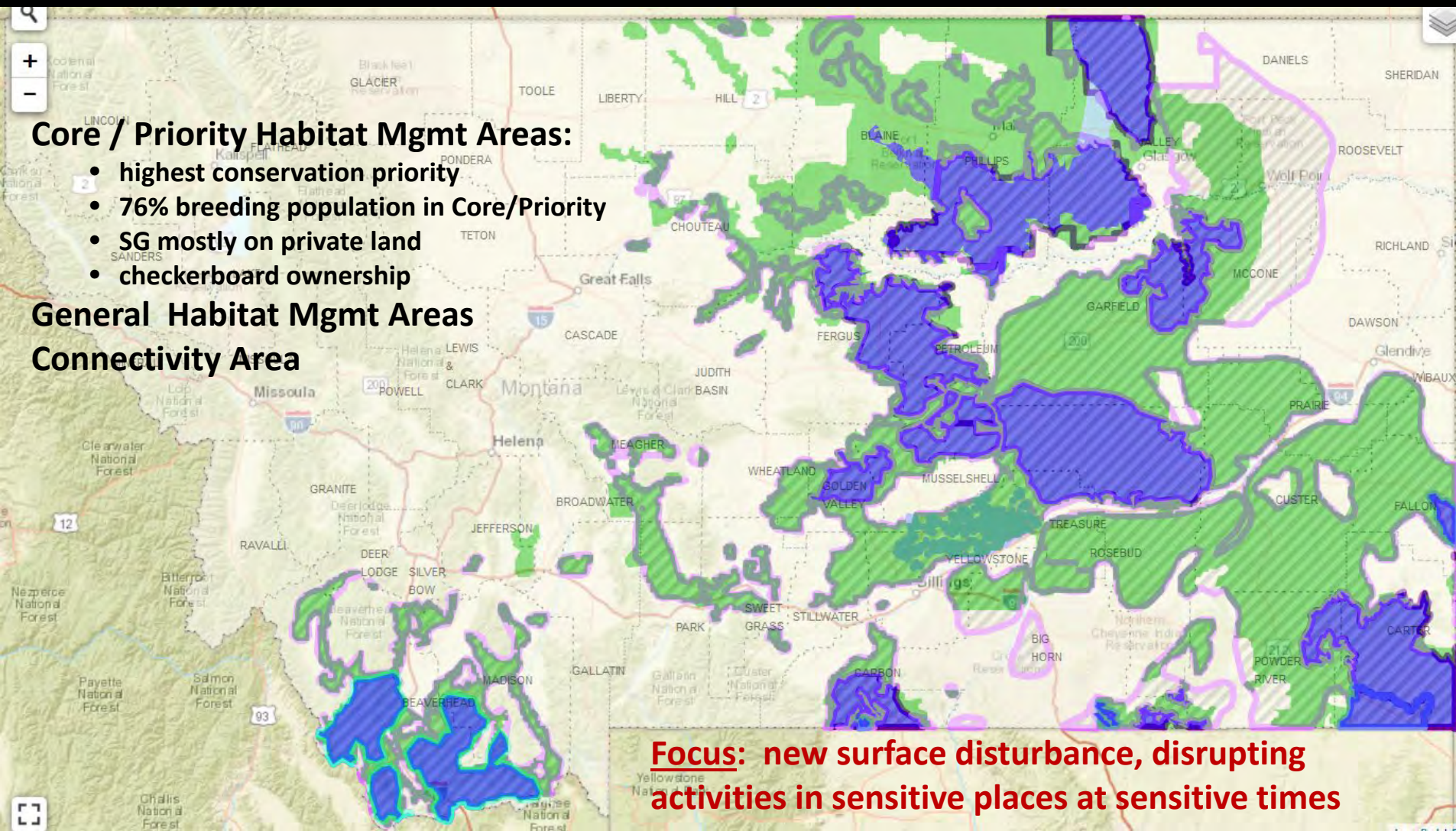
Core Areas Strategy: All Lands, All Hands

- *MT GRSG Stewardship Act*
- *MT Executive Order 12-2015*
- *BLM Land Use Plans*
- *USFS Land Use Plans*

Core / Priority Habitat Mgmt Areas:

- highest conservation priority
- 76% breeding population in Core/Priority
- SG mostly on private land
- checkerboard ownership

General Habitat Mgmt Areas Connectivity Area



Consultation Process



© John Carlson

Wind's Diverse Infrastructure: All is Important & Reviewed (Construction + Long Term Operations)



- major, minor Tx lines
- roads
- turbines
- turbine pads
- substation/s
- buried collection lines
- met towers
- buildings
- laydown yards
- other?



Photo Credits:

- Billings Gazette
- BLM
- USFWS
- MT Rural Electric Cooperatives Association
- Engineering News Record
- PacifiCorp

https://sagegrouse.mt.gov

Montana Sage Grouse Habitat Conservation Program

Adult male Greater Sage-Grouse compete for female attention by competitive dancing and vocalizing on Leks. Some leks can have over 50 males at a time.

Photo Credit: Richard Proddgers



PROGRAM INFORMATION

[Resources](#)
[Join the Mailing List](#)
[Learn More](#)



MONTANA SAGE GROUSE OVERSIGHT TEAM

[Members](#)
[Meeting Archive](#)



GRANTS

[Grant Information](#)
[Stewardship Fund Grants](#)



PROJECTS

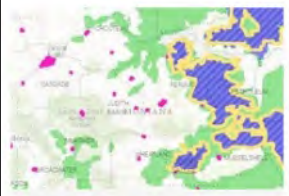
[Check if you are in habitat](#)
[Development Project](#)
[Quick Start Guide](#)
[Credit Project](#)



MONTANA SAGE GROUSE HABITAT CONSERVATION PROGRAM
1539 ELEVENTH AVE. HELENA, MT 59601 | SAGEGROUSE@MT.GOV | 406-444-1467 OR 406-444-2613

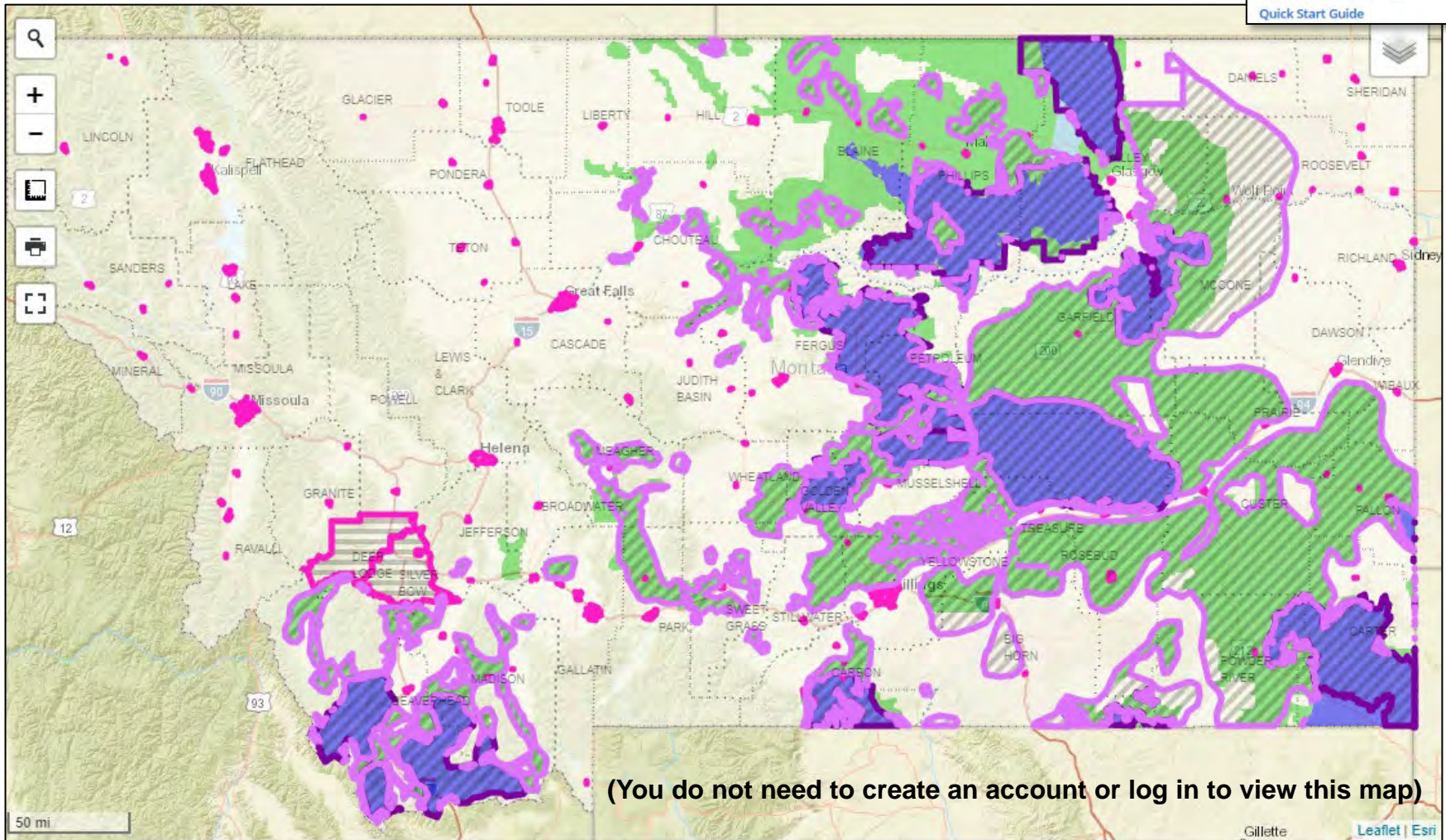
Is Consultation Necessary?

Yes, if any part your project is within mapped habitat:
private, State Trust, or public lands



PROJECTS

- Start or Follow up on a Project
- Check if you are in habitat
- Quick Start Guide



(You do not need to create an account or log in to view this map)



© John Carlson

For Developers,
live IT web application
&
personal user account

- see habitat categories, boundaries, lek “no surface occupancy” areas, other data layers in the library
- project data stored; secured, unique, private
- upload / download files
- consistency review work product available electronically
- automation
- proactive siting and design: avoid sensitive areas
- proactive siting and design: stay below disturbance thresholds

Note: Upgrades in Progress