

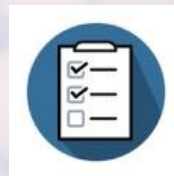


Wind Energy in Montana



Nicole Hughes
Executive Director
Renewable
Northwest

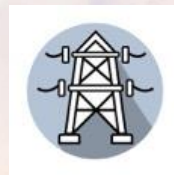
RENEWABLE N^oRTHWEST



Planning



Policy

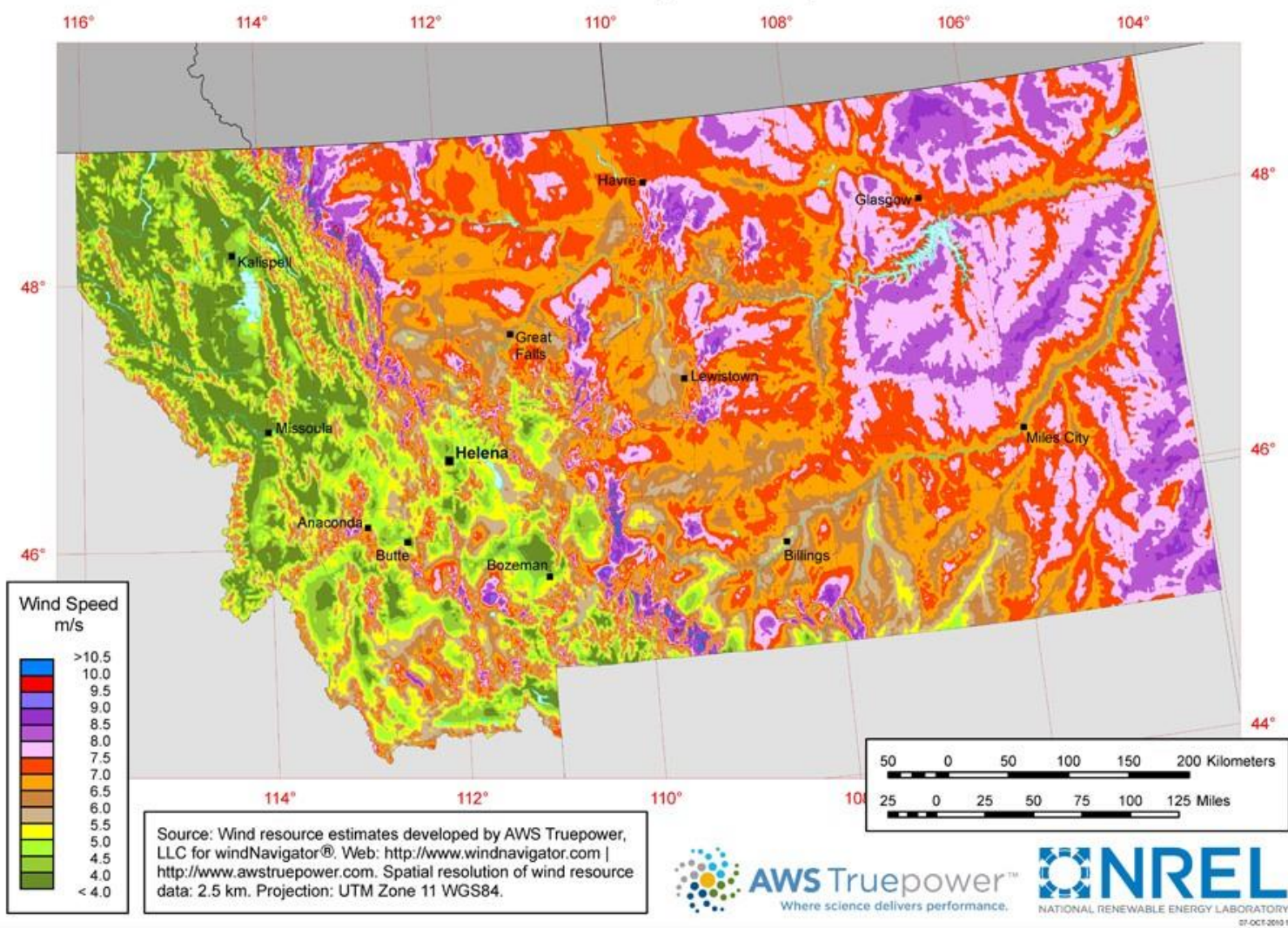


Markets and
Transmission

*The region's preeminent clean
energy advocacy organization*



Montana - Annual Average Wind Speed at 80 m



STATUS OF WIND IN MT

2019-2020 UTILITY IRP SUMMARY

- Operating 1,116MW
- Development ~2 GW

Utility	Puget Sound	Avista	Portland General	PacifiCorp**
Size	600MW	200MW	200MW	?
COD	2026	2024	2023	?
MT Specific	NO	YES	YES	?
MT Comp.	YES	YES	YES	?

***In PAC's last IRP, they did not show MT specific resource, however built 240Mw project to meet voluntary REC demand.*

OPERATING WIND PROJECTS - MT

Project	MW	County	Year	\$ Invested (millions)
Rim Rock Wind	189	Glacier, Toole	2012	300
Glacier Wind I & II	210	Glacier, Toole	2009	550
Fairfield	10	Teton	2014	25
Greenfield Wind	25	Teton	2016	34
Horseshoe Bend	9	Cascade	2006	15
Spion Kop Wind Farm	40	Judith Basin	2012	86
South Peak Wind Farm	80	Judith Basin	2020	125
Gordon Butte Wind Farm	9.6	Meagher	2012	20
Martinsdale Colony	2.8	Wheatland	2007	5
Two Dot Wind	9.7	Wheatland	2014	21
Judith Gap	135	Wheatland	2005	203
Musselshell 1 & 2	20	Wheatland	2012	40
Big Timber	25	Sweet Grass	2017	31
Stillwater	80	Stillwater	2018	83
Diamond Willow I & II	30	Fallon	2008	45
Pryor Mountain Wind Farm	240	Carbon	2020	406

ECONOMIC BENEFITS

- OVER \$2B INVESTED IN THE STATE
- OVER \$100M IN PROPERTY TAX REVENUE SINCE 2006

Opportunities

- S** Resource most competitive in region
- Cost competitive in many cases
- Increased demand in WA and OR
- Increase in market participation opportunities
- SB63 – lease for RE on state trust lands

Challenges

- Unfavorable political climate
- Little in state demand
- Transmission!
Transmission!
Transmission!
- Siting conflicts (military and wildlife)



RENEWABLE
NORTHWEST

CONTACT

**Nicole Hughes
Executive Director
Renewable Northwest
503-789-5741**